



## 56 The Village

Thurstonland, Huddersfield, HD4 6XX

A fabulous opportunity to create a beautiful two bedroom home in the heart of this stunning village just a short walk away from beautiful countryside walks, the popular village pub and cricket club as well as having a train station just a few minutes away. The property is ready for a programme of modernisation and has been priced to reflect this. Briefly comprises entrance porch, lounge, dining/family room and separate kitchen. Two first floor bedrooms and bathroom. Enclosed rear garden.

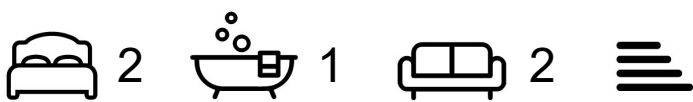
NO VENDOR CHAIN AND STUNNING VIEWS.

O.I.R.O £210,000



# 56 The Village

Thurstonland, Huddersfield, HD4 6XX



- A TWO BEDROOM GRADE II LISTED PERIOD COTTAGE
- READY FOR A PROGRAMME OF MODERNISATION
- CENTRAL VILLAGE LOCATION WITH REAR GARDEN ADJOINING FARM LAND
- FAR REACHING COUNTRYSIDE VIEWS TO THE REAR
- TWO SPACIOUS RECEPTION ROOMS AND SEPARATE KITCHEN
- NO VENDOR CHAIN

## Entrance

## Lounge

15'1" x 14'10" (4.60m x 4.52m)

## Dining Room

14'1" x 9'4" (4.29m x 2.84m)

## Kitchen

12'10" x 5'6" (3.91m x 1.68m)

## First Floor Landing

## Bedroom 1

14'9" x 13'10" (4.50m x 4.22m)

## Bedroom 2

7'5" x 6'6" (2.26m x 1.98m)

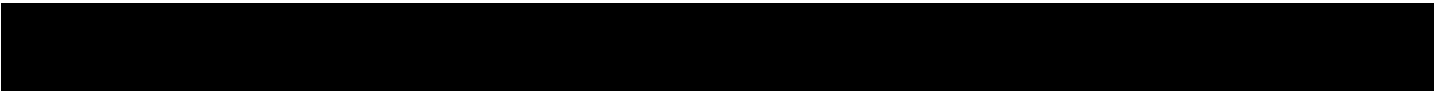
## Bathroom

10'4" x 6'10" (3.15m x 2.08m)

## Rear Garden



## Directions

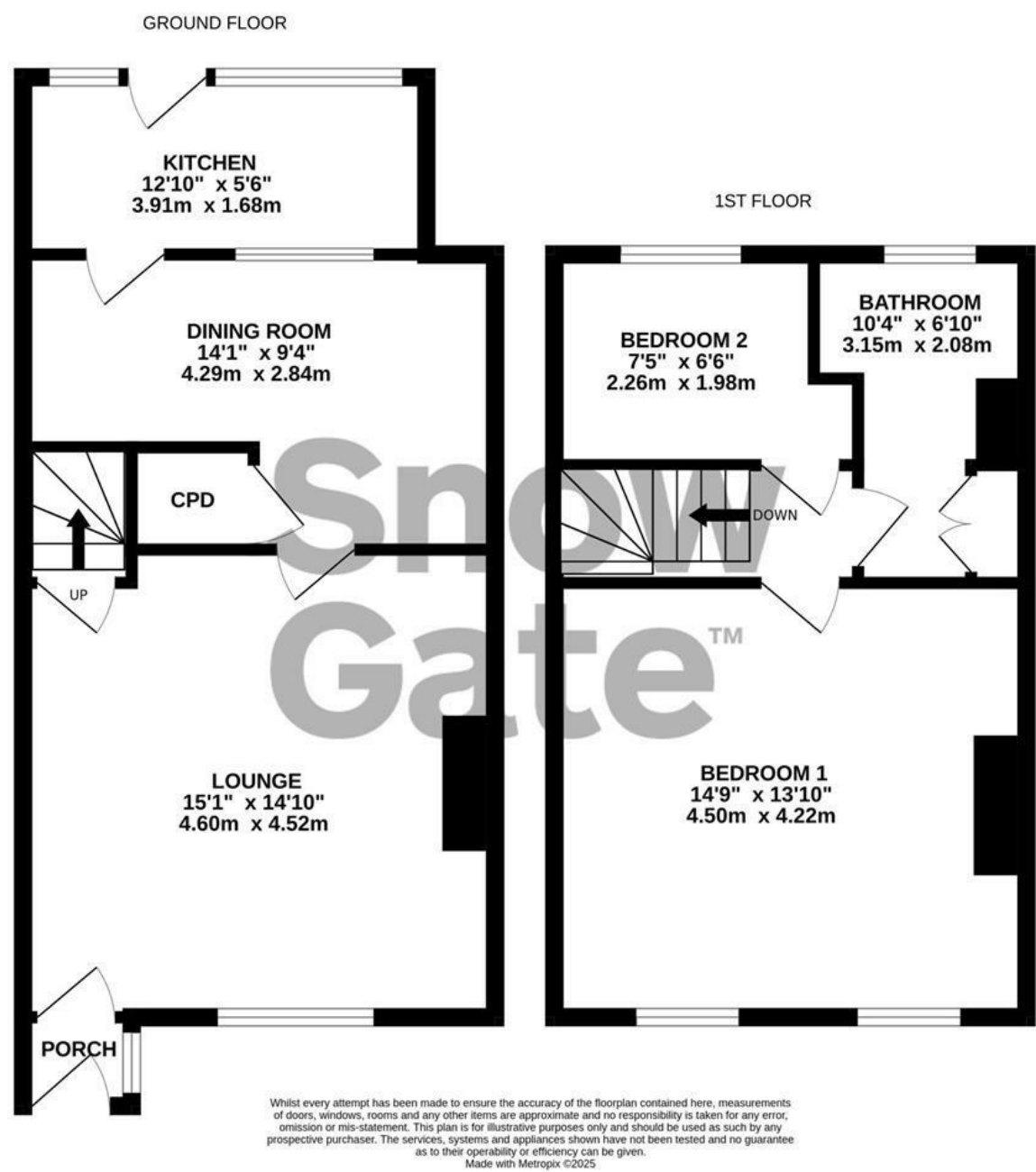








Floor Plan



These particulars, whilst believed to be accurate are set out as a general outline only for guidance and do not constitute any part of an offer or contract. Intending purchasers should not rely on them as statements of representation of fact, but must satisfy themselves by inspection or otherwise as to their accuracy. No person in this firms employment has the authority to make or give any representation or warranty in respect of the property.